

SEPAR 2000

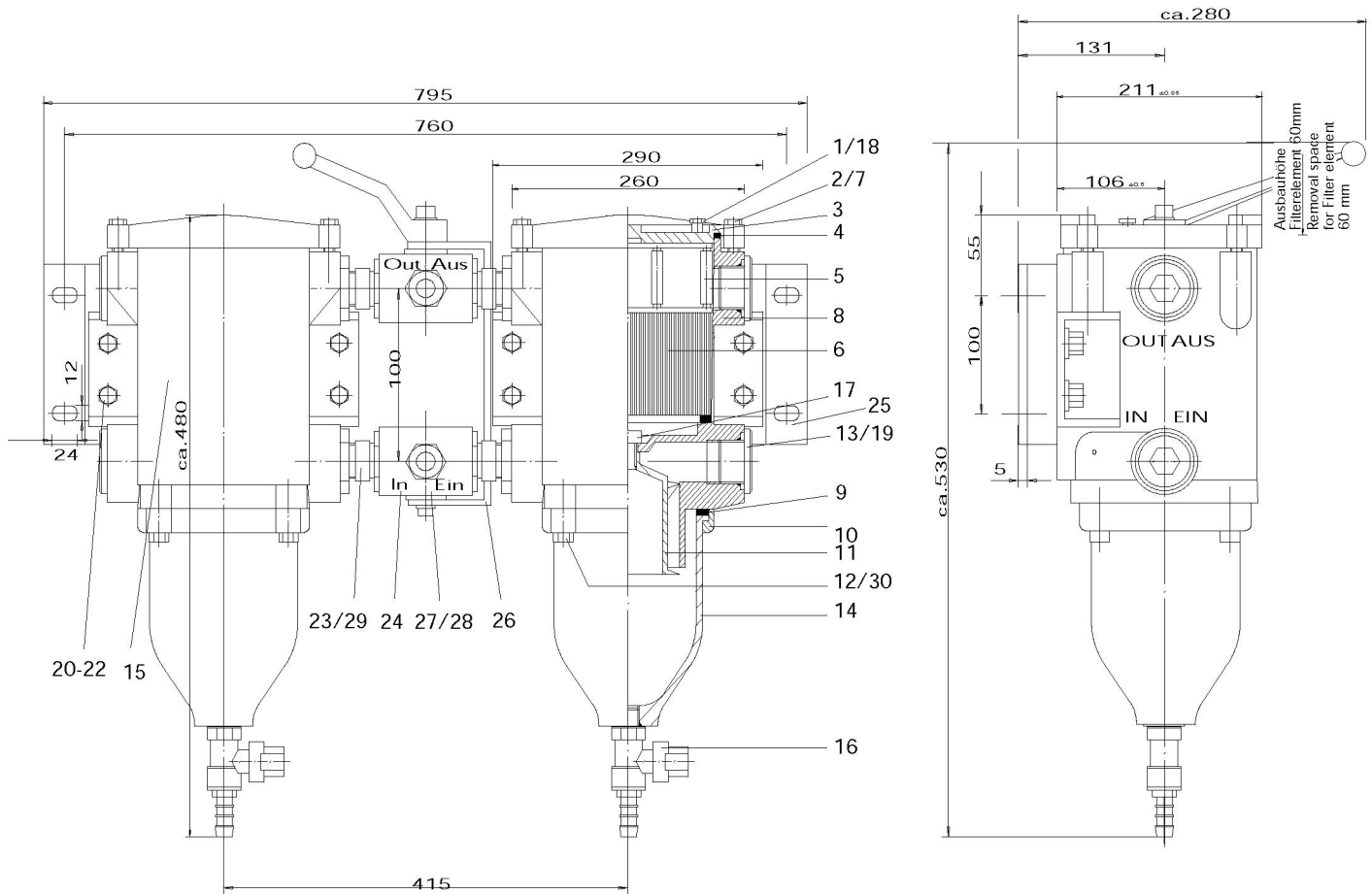
SWK 2000/40/UM



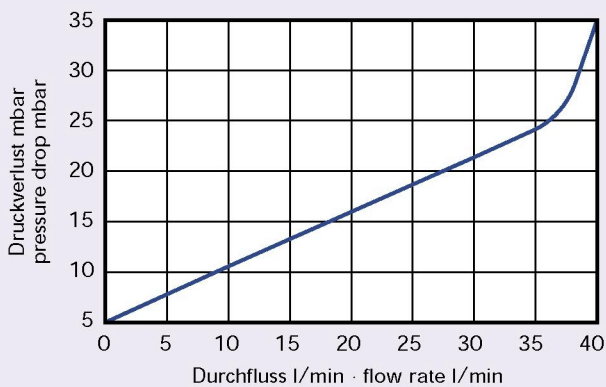
POS.	ARTICLE	PIECE	DESIGNATION	DESCRIPTION	POS.	ARTICLE	PIECE	DESIGNATION	DESCRIPTION
1	30408	2	Purge d'air	bleed valve	16	30456	2	Robinet de purge	drain cock
2	30404	8	Vis (couvercle)	screw (lid)	17	30560	2	Vis	screw
3	30435	2	Couvercle	lid	18	30558	2	Joint Pos.1	gasket f. Pos.1
4	30440	2	Joint de couvercle	lid gasket	19	30544	4	Joint Pos.13	gasket f. Pos.13
5	30299	2	Cassette à ressorts	spring cassette	20	30478	8	Vis	screw
6	04030	2	Élément filtrant	filter élément	21	30178	8	Ecrou frein	lock nut
7	30021	8	Rondelle	washer	22	30104	16	Rondelle	washer
8	10049	1	Corps	housing	23	30468	4	Raccord droit	straight fitting
9	30442	2	Joint de bol	bowl gasket	24	30467	1	Vanne	reversing valve
10	30446	2	Anneau de bol	bowl retainer ring	25	30470	1	Support	mounting plate
11	30438	2	Centrifuge	centrifuge	26	30493	1	Poignée	reversing lever
12	30567	8	Vis (anneau de bol)	screw (for bowl retainer ring)	27	30340	2	Ecrou	union nut
13	30445	4	Bouchon de fermeture	blind screw	28	30341	2	Bague	cutting ring
14	30457	2	Bol	bowl	29	30395	4	Joint (Pos.23)	gasket (Pos.23)
15	10048	1	Corps	housing	30	30448	8	Rondelle	washer

SEPAR 2000

SWK 2000/40/UM



FLUSSDIAGRAMM · FLOW DIAGRAMM



Technische Änderungen vorbehalten
We reserve the right to make technical changes without notification

Willibrord Lösing
Filter-Technik



Postfach 866009
45517 Hattingen
Essener Straße 108
45529 Hattingen
Telefon 02324/94600
Telefax 02324/40842

Max. Durchflussmenge: 40 l/min Anschluss: 35 mm Rohr Ø
Max. flow rate: 40 l/min Connection: 35 mm Pipe Ø