

**SEPAR 2000**

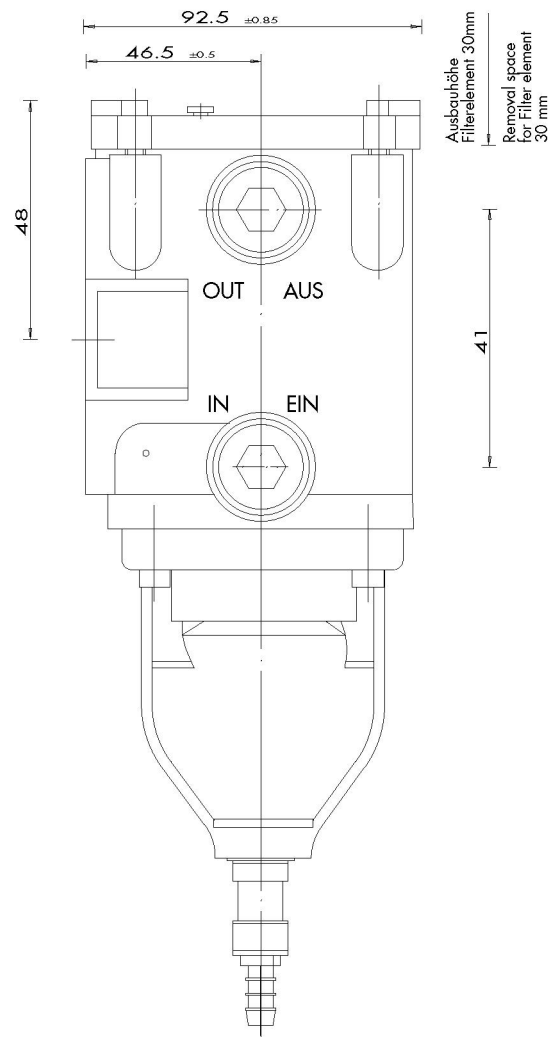
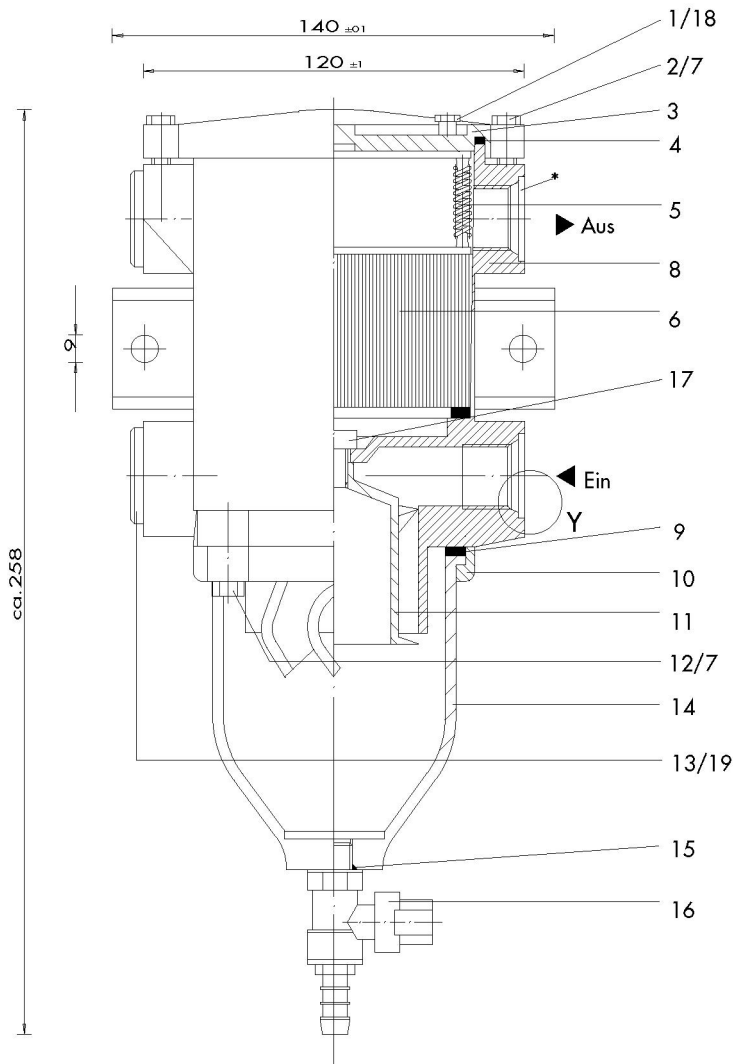
SWK 2000/5

**SEPAR  
FILTER**

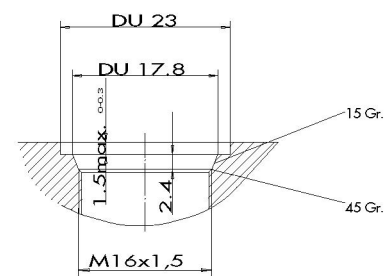
REFERE	ARTICLE NO	QTE	DESIGNATION FRANCAIS	DESIGNATION ANGLAIS	REFERE	ARTICLE NO	QTE	DESIGNATION FRANCAIS	DESIGNATION ANGLAIS
1	30408	1	Purge d'air	bleed valve	11	30548	1	Centrifuge	centrifuge
2	30430	4	Vis (couvercle)	screw (lid)	12	30561	4	Vis (anneau de bol)	screw (for bowl retainer ring)
3	30542	1	Couvercle	Lid	13	30471	2	Bouchon fermeture	blind screw
4	30545	1	Joint couvercle	lid gasket	14	30984	1	Bol	bowl
5	30295	1	Cassette à ressorts	spring cassette	15	40002	1	Joint	gasket
6	00530	1	Élément filtrant	filter élément	16	30366	1	Robinet de purge	drain cock
7	30447	8	Rondelle	Washer	17	30560	1	Vis	screw
8	30541	1	Corps	Housing	18	30558	1	Joint Pos.1	gasket f. Pos.1
9	30565	1	Joint de bol	bowl gasket	19	30472	2	Joint. Pos.1 3	gasket f. Pos.1 3
10	30564	1	Anneau de bol	bowl retainer ring					

## SEPAR 2000

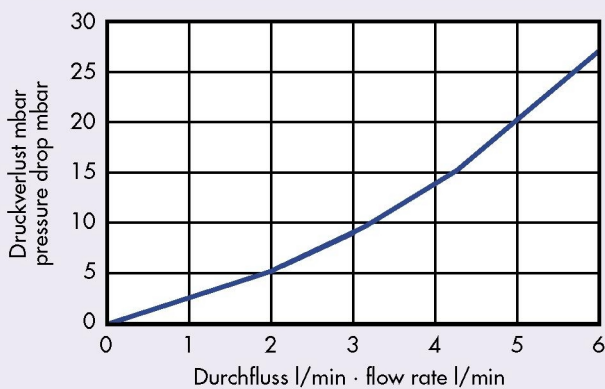
SWK 2000/5



### Detail Y



### FLUSSDIAGRAMM · FLOW DIAGRAMM



Technische Änderungen vorbehalten  
We reserve the right to make technical changes without notification

Willibrord Lösing  
Filter-Technik



Postfach 86 6009  
45517 Hattingen  
Essener Straße 108  
45529 Hattingen  
Telefon 0 23 24/9 46 00  
Telefax 0 23 24/408 42

Max. Durchflussmenge: 5 l/min    Anschlussgewinde: M 16 x 1,5  
Max. flow rate: 5 l/min        Thread: M 16 x 1,5