

SEPAR 2000

SWK 2000/10/U

SEPAR FILTER

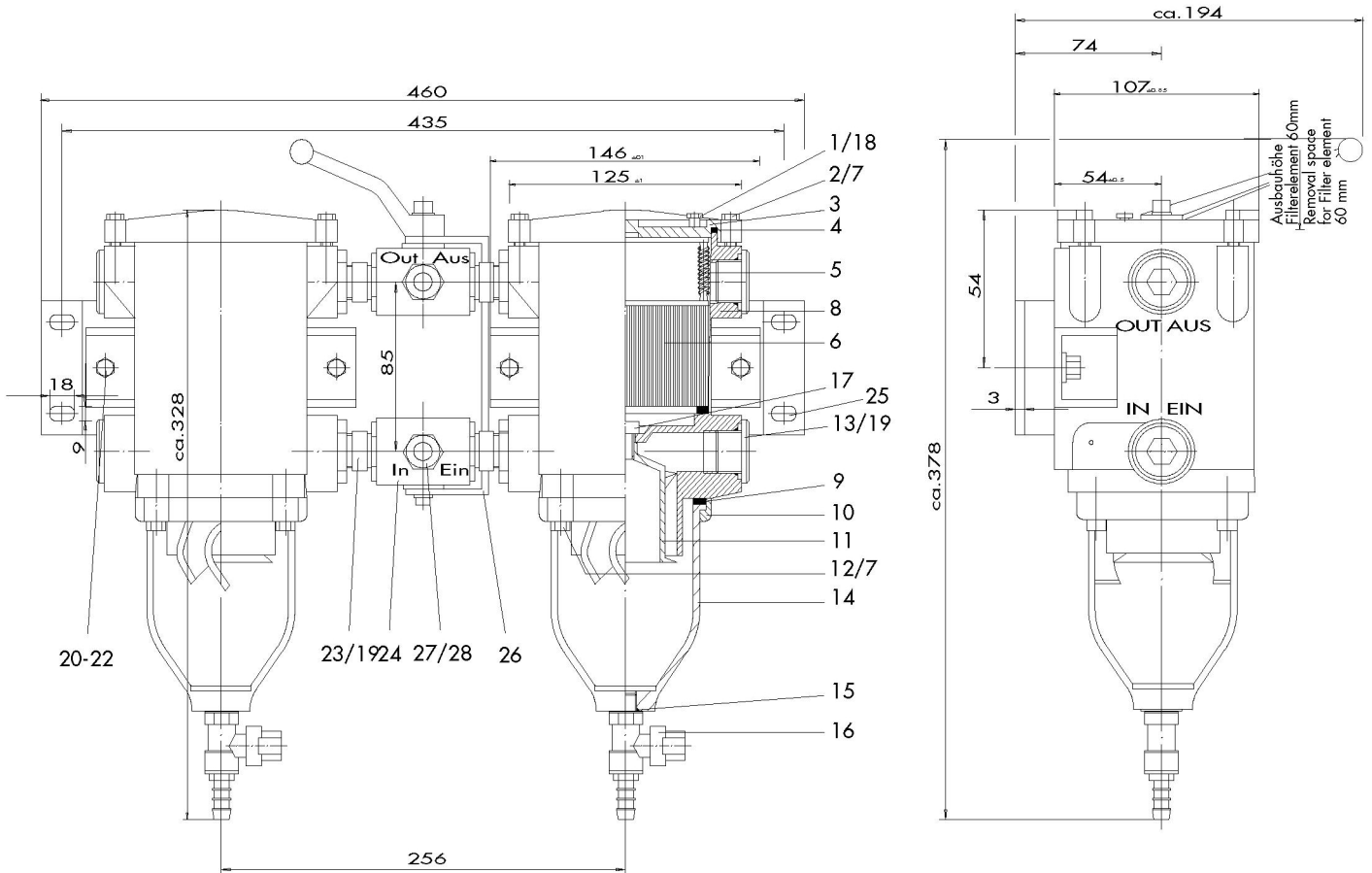


POS.	ARTICLE NR.	PIECES	DESIGNATION	DESCRIPTION	POS.	ARTICLE NR.	STÜCK/PIECES	DESIGNATION	DESCRIPTION
1	30408	2	Purge d'air	bleed valve	15	40002	2	Joint	gasket
2	30567	8	Vis (couvercle)	screw (lid)	16	30366	2	Robinet de purge	drain cock
3	30553	2	Couvercle	lid	17	30560	2	Vis	screw
4	30556	2	Joint de couvercle	lid gasket	18	30558	2	Joint . Pos.I	gasket f. Pos.I
5	30297	2	Cassette à ressorts	spring cassette	19	40003	8	Joint Pos.I 3	gasket f. Pos.I 3
6	01030	2	Élément filtrant	filter élément	20	30133	4	Vis	screw
7	30448	16	Rondelle	washer	21	30022	4	Ecrou frein	lock nut
8	30552	2	Corps	housing	22	30021	8	Washer	washer
9	30576	2	Joint de bol	bowl gasket	23	30102-1	4	Raccord droit	straight fitting
10	30569	2	Anneau de Bol	bowl retainer ring	24	30476	1	Vanne	reversing valve
11	30563	2	Centrifuge	centrifuge	25	30477	1	Support	mounting plate
12	30568	8	Vis (anneau de bol)	screw (for bowl retainer ring)	26	30491	1	Poignée	reversing lever
13	30226	4	Bouchon de fermeture	blind screw	27	30247	2	Ecrou	union nut
14	30985	2	Bol	bowl	28	30248	2	Bague	cutting ring

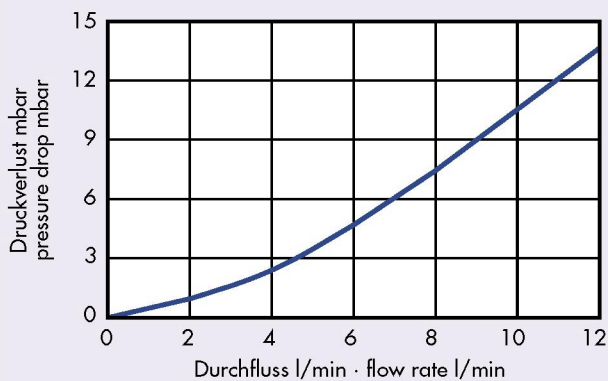
SEPAR FILTER

SEPAR 2000

SWK 2000/10/U



FLUSSDIAGRAMM · FLOW DIAGRAMM



Technische Änderungen vorbehalten
We reserve the right to make technical changes without notification

Willibrord Lösing
Filter-Technik



Postfach 866009
45517 Hattingen
Essener Straße 108
45529 Hattingen
Telefon 023 24/9 46 00
Telefax 023 24/408 42

Max. Durchflussmenge: 10 l/min Anschluss: 15 mm Rohr Ø
Max. flow rate: 10 l/min Connection: 15 mm Pipe Ø

